

# The DementiaECHO Project

Improving dementia care in regional and remote communities

## ProjectECHO

Project ECHO (Extension for Community Health Outcomes) is a knowledge-sharing network designed to create a 'learning loop' between health professionals with the aim of increasing knowledge and access to health care in local communities.

The ProjectECHO motto is, *Move Knowledge not People.*

## Why DementiaECHO?

Based on the Project ECHO® telementoring program, DementiaECHO aims to improve local workforce capacity and access to complex dementia, for communities with limited access to specialist services.

## The DementiaECHO Project

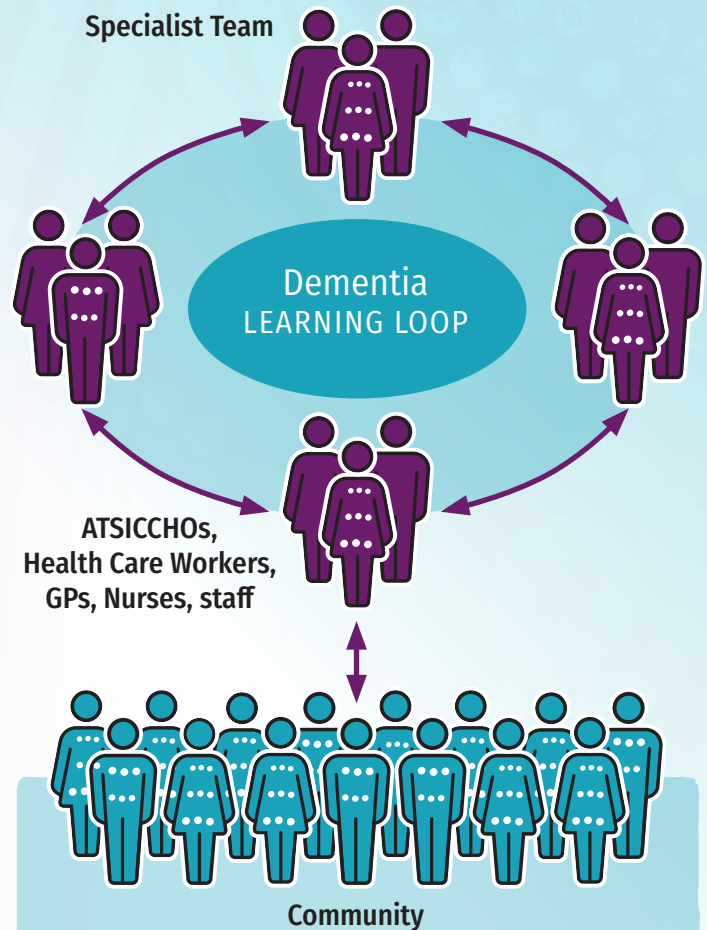
The need for greater access to dementia care is significant, with prevalence rates of dementia in Aboriginal and Torres Strait Islander populations being one of the highest in the world.<sup>1</sup> Access to health care in regional and remote communities create an additional barrier that technology can help address.<sup>2</sup>

The Centre for Online Health (COH) at The University of Queensland and Queensland Aboriginal and Islander Health Council (QAIHC) have formed a partnership to increase access to dementia care. Specifically, they are exploring how place-based solutions for dementia care with for Aboriginal and Torres Strait Islander people may be developed in collaboration with Aboriginal and Torres Strait Islander Community Controlled Health Organisations (ATSICCHOs). Aboriginal and Torres Strait Islander Health Workers, GPs, Allied Health Workers and other interested ATSICCHOs staff are invited to join monthly live video sessions linking QAIHC services and a multi-disciplinary team of dementia specialists. An application is under way to incorporate DementiaECHO as an RACGP accredited CPD course.

## What to expect from DementiaECHO Sessions

The monthly sessions will be held on the first Thursday of the month at 12pm. Each 45 minute session will consist of:

- a ten minute presentation (topics suggested by participants), and
- a case presentation and discussion put forward by one of QAIHC's Members.



## The Dementia Learning Loop

Project ECHO® creates a 'learning loop' model comprised of reciprocal learning between community providers and specialists.

Dementia 



THE UNIVERSITY  
OF QUEENSLAND  
AUSTRALIA

Centre for Online Health  
CENTRE FOR HEALTH SERVICES RESEARCH



1. Lo Giudice D., Smith K., Fenner S., Hyde Z., Atkinson D., Skeaf L., Malay R., Flicker L. *Incidence and predictors of cognitive impairment and dementia in Aboriginal Australians: A follow-up study of 5 years.* *Alzheimers Dement.* (2016) Mar;12(3):252-61. doi: 10.1016/j.jalz.2015.01.009. Epub 2015 May 18. PMID: 25998515.

2. Caffery L.J., Meiklejohn J., Bradford N., Smith A.C., Langbecker D. (2018) How telehealth facilitates the provision of culturally appropriate healthcare for Indigenous Australians. *Journal of Telemedicine and Telecare*, 24(10), 676-682